

Wedgetail Rails and Platform Fitting Instruction

To suit Ford F-Series 250/350/450 Dual Cab 2017– On



WT-FFS17DC-1414

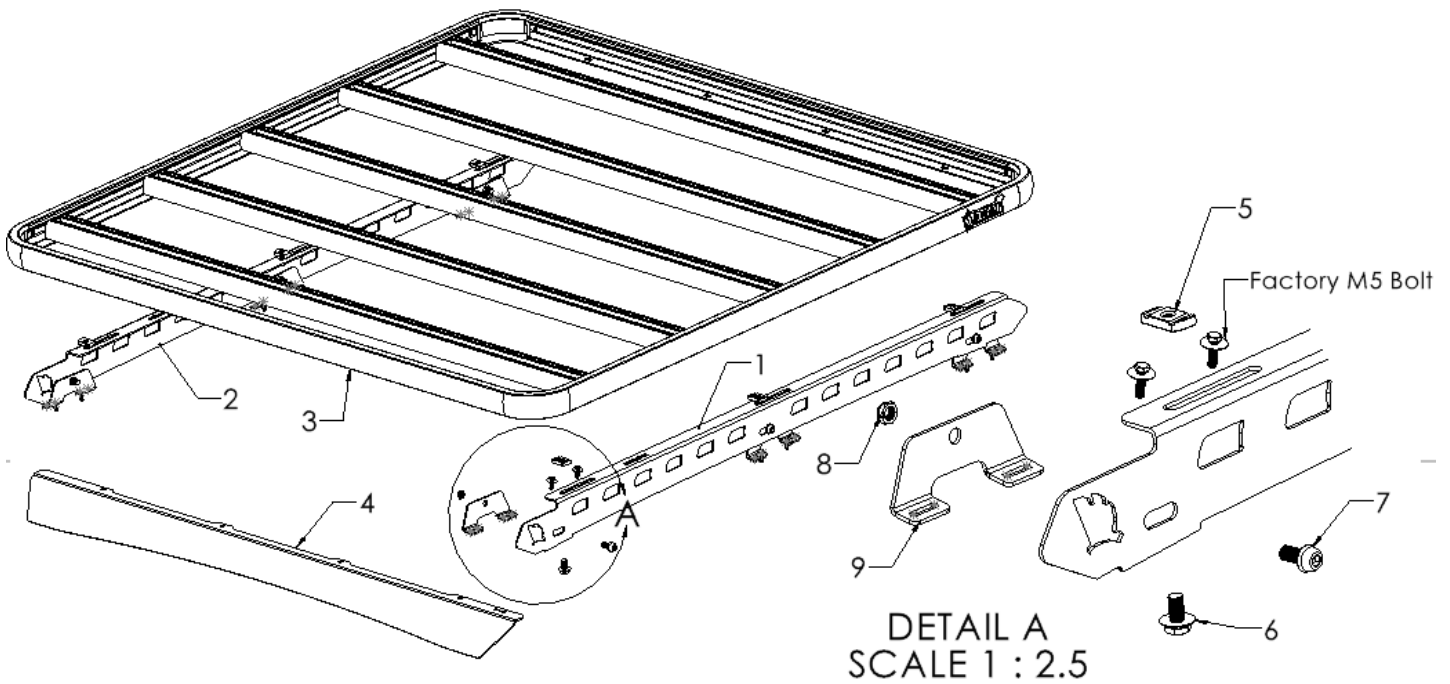
Congratulations on the purchase of your Australian made Wedgetail Roof Rack product.

Please read and follow the instructions carefully to ensure correct fitment.

Contact us if any parts appear missing, incorrect, or damaged.

Tools Required:

- Allen key (6 mm)
- Spanner (8mm & 17mm)



KIT CONTENTS					
ITEM	COMPONENT	QTY	ITEM	COMPONENT	QTY
1	Wildtrak 2022 Wedgetail Left Rails	1	6	M10 X 20 Stainless Hex Bolt	6
2	Wildtrak 2022 Wedgetail Right Rails	1	7	M10 Dacro Sems Dome Head	6
3	Wedgetail Pre-assemble Platform	1	8	10mm Nyloc Nut	6
4	Wedgetail Wind Deflector & kits	1	9	FFS Lug	6
5	M10 Unistrut	6			

Removing roof channel cover strips

1

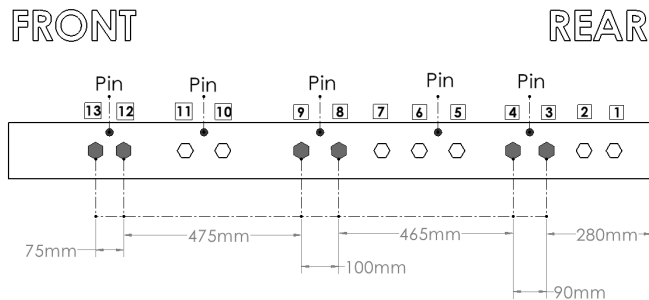
- Remove the roof channel cover strips to reveal the bolts underneath



Mounting Lug fitment

2

- Remove every second pair of factory bolts from both side of the roof (Total 6 bolts that need to be removed per sides). **Starting with the pair closest to the front of the cabin.**
- Bolt 3, 4, 8, 9, 12 & 13 are the bolts that need to be removed

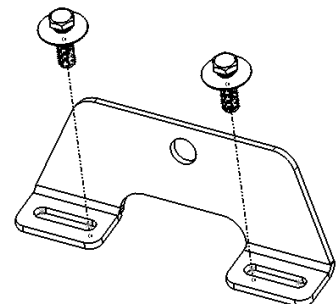


3

- Place the mounts over the bolt holes
- Mark the mastic around the lugs and remove the marked mastic to ensure the lugs can sit flat on the roof channel
- Apply Silicone on all the roof channel mounting holes to prevent any water ingress**

4

- Place the lugs onto the roof and fasten using the factory bolts



Wedgetail Rails and Platform Fitting Instruction

To suit Ford F-Series 250/350/450 Dual Cab 2017– On



WT-FFS17DC-1414

5

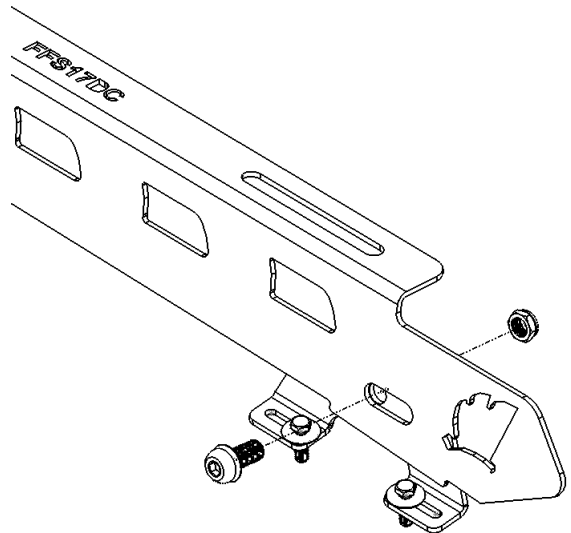
- Place the cover back in the channel and mark the cover strip where the lugs will sit
- Cut the cover where marker, roughly 5-10mm deep to ensure the cover will fit around the lugs

6

- **Apply silicone to hold down the rear of the cover strip**
- Use the tools available to you to get the final clip into position

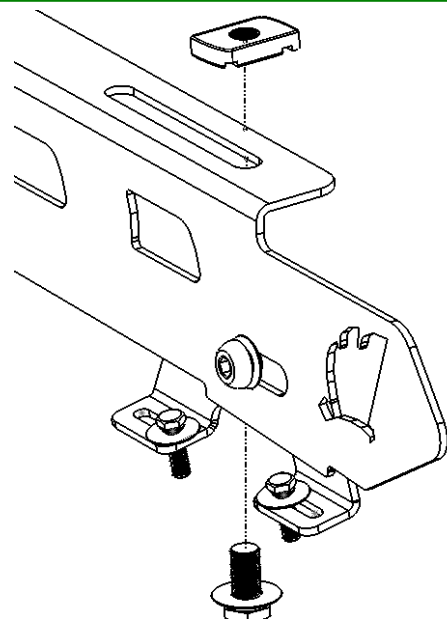
7

- Place rail into position of the lugs and install using 10mm hardware. Do not tighten fully until adjusting the rails position according to the position of the lugs



8

- **Attach the channel nuts to the top of rail.**
 - Fit 10mm Bolt / Split washer / Flat washer / Channel Nuts to the top of rail.
- * Channel nuts to the top as shown in the following diagram



Wedgetail Rails and Platform Fitting Instruction

To suit Ford F-Series 250/350/450 Dual Cab 2017– On



WT-FFS17DC-1414

Assemble the Wedgetail Platform to the rails

9

- Place the Wedgetail Platform on the rails (Wind deflector mounting towards the front of vehicle), then spin the channel nuts 90 degree in the channel on the underside of the rack till they lock into the channels. Do not tighten fully.

10

- Centralize the rack side to side (using a tape measure) on the wedgetail rails.

11

- Fully tighten remaining bolts in the following order:
 1. Rails to the lugs
 2. Rails to platform
 3. Attach wind Deflector.

NOTE-Ensure the channel nuts are 90 degrees to the channels.



Check fastenings are firmly tensioned at regular intervals.

Do not overtighten, this will preserve the spring washers.

Thank you for your purchase.

Please complete your warranty application following correct installation.

Wedgetail by Tradesman Roof Racks

Innovation through Inspiration