

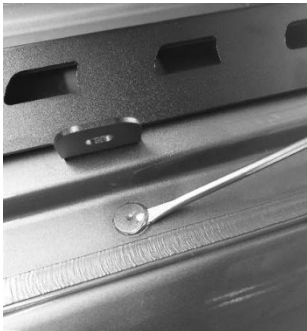


Fitting Instruction for Mercedes
Sprinter/ Volkswagen Crafter

INSTALLING RAILS AND ROOF RACK:

Congratulations on the purchase of your quality Australian made Wedgetail Roof Rack product, please follow these instructions to ensure a safe and correct fitment.

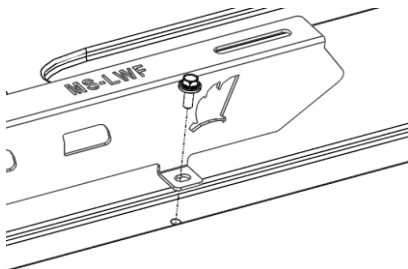
1. Place the front and rear rail on the vehicles roof and align them with the covered slots as shown below.
2. Insert the screwdriver from the sides and pull out the plastic caps.



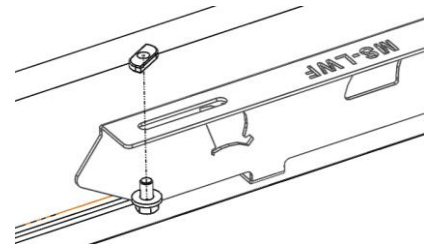
3. After taking off the coverings, put some sealer on all the holes.



4. Locate rail on top and place M8 stainless bolts through the holes.



5. Fasten using plain washer and M8 Nyloc Nut from underneath.
6. After fastening all the rails, fit 10mm Bolt / Split washer/ Flat washer with the channel Nuts on top of rail.
**Channel nuts to the top as shown in the next diagram*



7. Place the Wedgetail Platform on the rails (Wind deflector mounting towards the front of vehicle), then spin the channel nuts 90 degree in the channel on the underside of the rack till they lock into the channels. Do not tighten fully.
8. Centralize the rack side to side (using a tape measure) on the wedgetail rails.
9. Fully tighten remaining bolts in the following order:
 - a. Rail to the Lug
 - b. Rails to Platform
** ensure the channel nuts are 90 degree to the channels in the platform*
 - c. Install wind deflector using 8mm hardware

Note: Check fastenings are firmly tensioned at regular intervals.

Do not overtighten, this will preserve the spring washers.

Thank you for your purchase.

Please complete your warranty application following correct installation.

Wedgetail by Tradesman Roof Racks

Innovation through Inspiration