

# Wedgetail Rails and Platform Fitting Instruction

To suit Toyota Fortuner (Toyota Factory Rails)



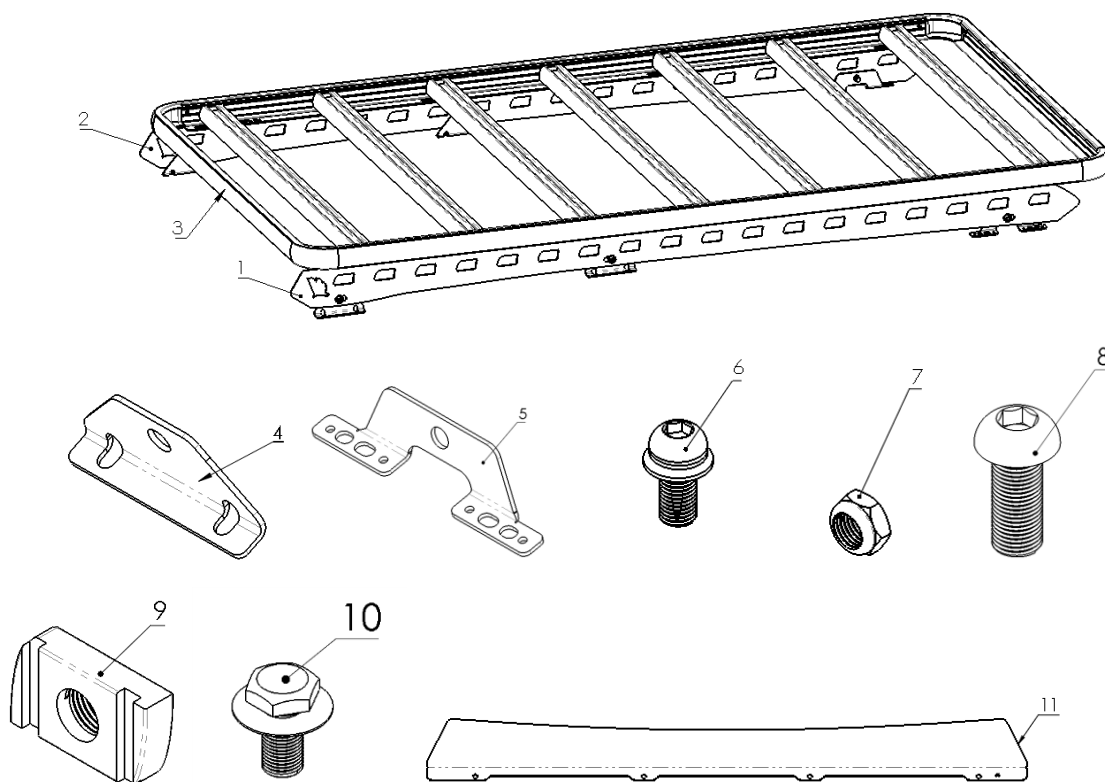
WT-TFORTFR-2212

**Congratulations on the purchase of your Australian made Wedgetail Roof Rack product.**

- Please read and follow the instructions carefully to ensure correct fitment.
- Contact us if any parts appear missing, incorrect, or damaged.
- Clean the roof prior to fitting the roof racks.

### Tools Required:

- Drill Driver with 10mm drill bit
- Hex key (6 and 8 mm)



## KIT CONTENTS

ITEM	COMPONENT	QTY	ITEM	COMPONENT	QTY
1	Fortuner Left Rail	1	6	M8 22mm Dome Head bolt with Washer	14
2	Fortuner Right Rail	1	7	8mm Nylon Nut	14
3	Wedgetail Pre-assemble Platform	1	8	M10 Dome Head Bolt	6
4	Front & Middle Mounting Lug	4	9	M10 Unistrut	8
5	Rear Mounting Lug	2	10	M10 20mm Hex Bolt	8
			11	Wedgetail Wind Deflector & Kits	1

### Removing Factory Roof Rails

1

- Lower the interior head lining to expose factory fitted roof rail mountings.
- Remove nuts and factory fitted roof rails.

#### Clean Roof Area

Wipe clean any dirt on roof area and around mounting holes.



#### Caution

When drilling, please use drill spacer to avoid damage to interior components.

### Install mounting Lugs

2

- **Install Front Mounting Lug**
  - Use Front Hole and drill second hole to 10mm in diameter.



3

- **Install Middle Mounting Lug**
  - Use Front hole and mark & drill second hole to 10mm in diameter.



4

- **Install Rear Mounting Lug**
  - Position mounting lug using the existing holes as shown.



5

### Assemble lugs to roof

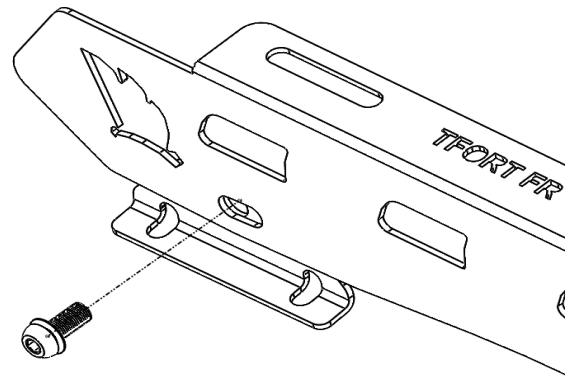
- Ensure lug positions match rails mounting holes
- Fasten Wedgetail mounting lugs to vehicle roof using M8 sems bolts & nuts provided.
  - 2 Front
  - 2 Middle
  - 2 Rear
- Please use sealant under lugs & around fasteners (Neutral Cure non-corrosive silicone/sealant)
- Plug the remaining unused factory holes by using M8 sems bolts & nuts. Apply sealant to prevent water ingress.



6

### - Assemble rails to lugs

- Attach Rails to lugs using 10mm hardware with the Wedgetail logo facing to the front of the vehicle. Refer to the diagram (do not tighten fully)

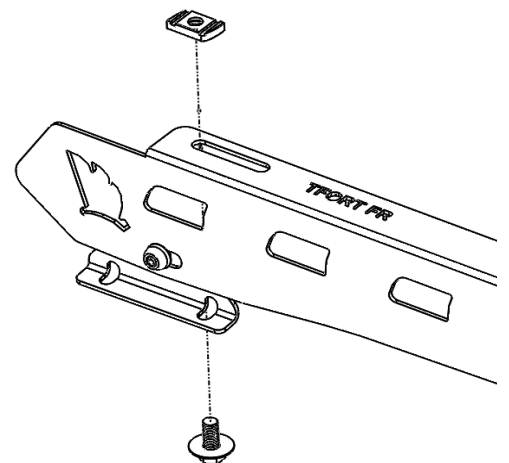


7

### - Attach the channel nuts to the top of rail.

- Fit 10mm Bolt / Split washer / Flat washer / Channel Nuts to the top of rail.

\*Channel nuts to the top as shown in the following diagram



# Wedgetail Rails and Platform Fitting Instruction

## To suit Toyota Fortuner (Toyota Factory Rails)



WT-TFORTFR-2212

### Assemble the Wedgetail platform to the rails

8

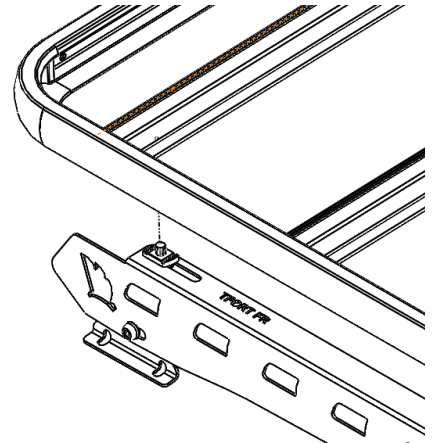
- Place the Wedgetail Platform on the rails (Wind deflector mounting towards the front of vehicle), then spin the channel nuts 90 degree in the channel on the underside of the rack till they lock into the channels. Do not tighten fully.

9

- Centralize the rack side to side (using a tape measure) on the wedgetail rails.

10

- Fully tighten remaining bolts in the following order:
  1. Rails to the lugs
  2. Rails to platform
  3. Attach wind Deflector.



**NOTE**-Ensure the channel nuts are 90 degrees to the channels.



Check fastenings are firmly tensioned at regular intervals.

Do not overtighten, this will preserve the spring washers.

Thank you for your purchase.

Please complete your warranty application following correct installation.

Wedgetail by Tradesman Roof Racks  
*Innovation through Inspiration*