

Wedgetail Rails and Platform Fitting Instruction

To suit Isuzu Dmax Extra Cab / Mazda BT50 Extra Cab



WT-IDMAXXCAB-1113

WT-BT50XC-1113

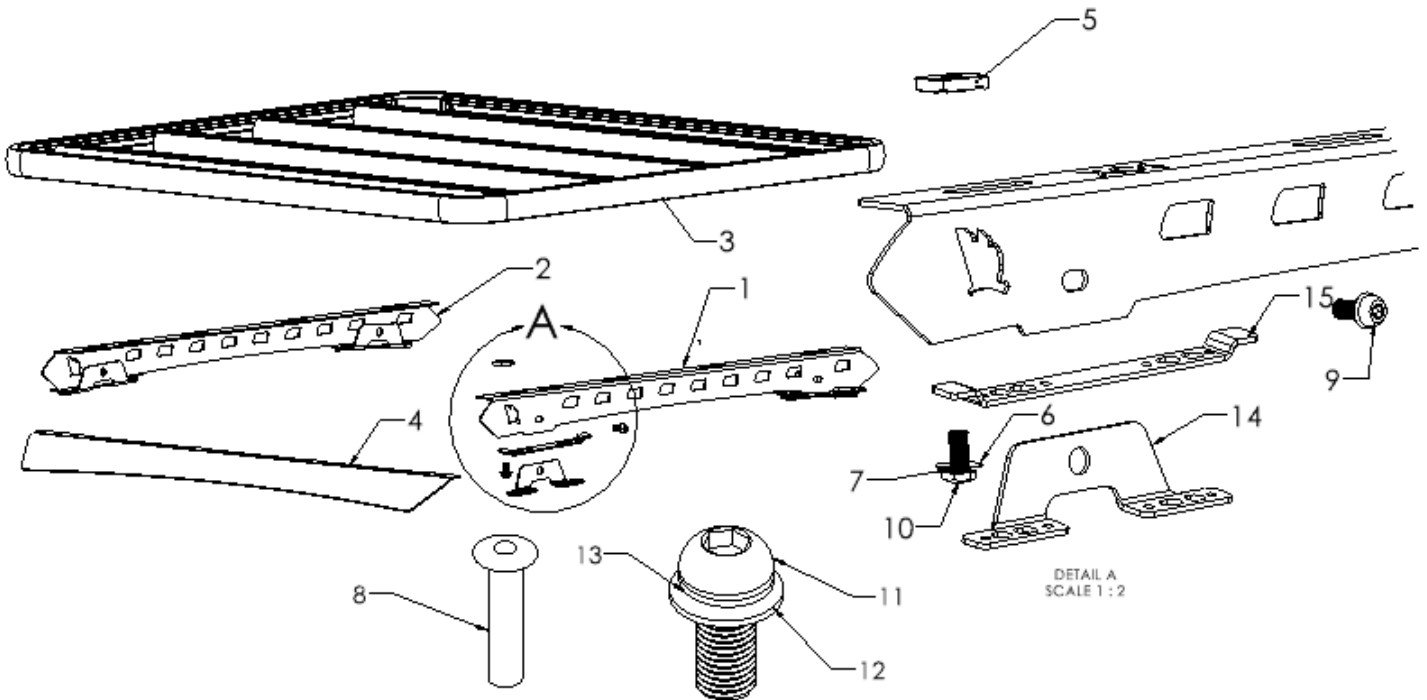
Congratulations on the purchase of your Australian made Wedgetail Roof Rack product.

Please read and follow the instructions carefully to ensure correct fitment.

Contact us if any parts appear missing, incorrect, or damaged.

Tools Required:

- Allen key (4 and 6 mm)
- Drill bit 5mm with drill stop



KIT CONTENTS

ITEM	COMPONENT	QTY	ITEM	COMPONENT	QTY
1	Pajero Sport Wedgetail Left Rails	1	9	M10 x 25 Button Socket screw	4
2	Pajero Sport Wedgetail Right Rails	1	10	M10 x 20 Stainless Hex Bolt Sems	6
3	Wedgetail Pre-assemble Platform	1	11	8mm x 25mm Domie Bolt	4
4	Wedgetail Wind Deflector & kits	1	12	8mm Flat Washer	4
5	M10 Unistrut	6	13	M8 Zinc Split Washer	4
6	10mm Flat Washer	4	14	Colorado Lug	4
7	M10 Split Washer	4	15	Dmax Col Cover Plate	4
8	16mm Rivet	16	16		

Mounting Installation – Front Lug

1

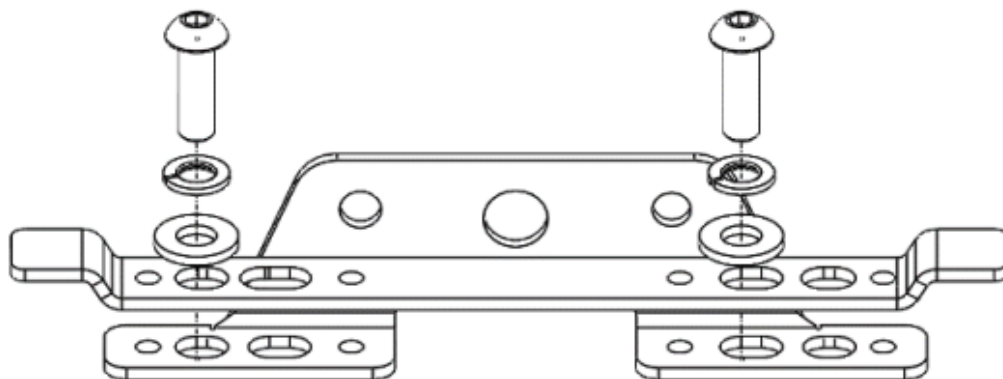
- Remove the rubber moulding covering the rood channel from the rear of the vehicle to windscreen

2

- Locate the factory points on the roof (Front Only). Mark the point on the rubber where roof mounting holes are located. And proceed to Step 3.
- If the vehicle comes without the factory point, the mounting lug position is 320mm away from the windscreen. Mark the point on the rubber. And proceed to Step 4.

3

- Place the mounting lug on the rubber so that the centre is aligned with the lines marked in the previous step. Mark to the left and right edge of lug on the rubber. Now neatly trim the rubber along these lines. Re-install the rubber moulds checking that the lugs have clearance once rubber trim is in place.
- Apply silicone or urethane sealer (natural cure sealants only) in and around the 8 mounting points in the roof. Now fit the 2 mounting lugs and cover plates using M8 hardware provided. Refer to diagram. Do not tighten fully.
- Proceed to Step 5



Wedgetail Rails and Platform Fitting Instruction

To suit Isuzu Dmax Extra Cab / Mazda BT50 Extra Cab

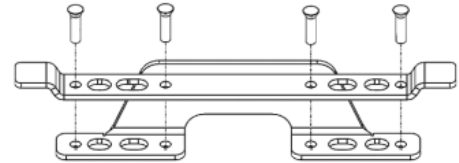


WT-IDMAXXCAB-1113

WT-BT50XC-1113

4

- Place front mounting Lug in the roof according to the marked position. Drill all 4 rivet mounting holes in lug using a 5mm drill with drill stop, drilling one at a time then placing a rivet through hole to keep lined up (DO NOT RIVIT IN PLACE YET).
- Paint all holes using either an enamel or acrylic paint (to apply you can use a cotton bud if paint brush is not available).
- Apply silicone or urethane sealer (natural cure sealants only) to the 5mm drilled rivet holes.
- Attach lugs to the roof of vehicle using 5mm rivets as shown.



Mounting Installation – Rear Lug

5

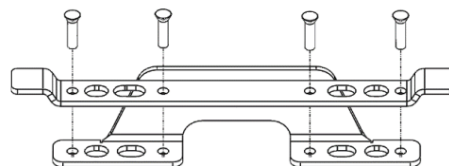
- Place the mounting rail aligning the front mounting point to the front lug to identify the rear lug placement.

6

- Place rear mounting Lug in the roof according to the marked position. Drill all 4 rivet mounting holes in lug using a 5mm drill with drill stop, drilling one at a time then placing a rivet through hole to keep lined up (DO NOT RIVIT IN PLACE YET).

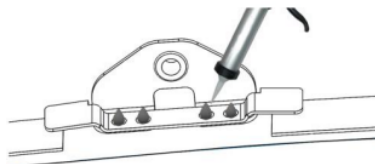
7

- Paint all holes using either an enamel or acrylic paint (to apply you can use a cotton bud if paint brush is not available).
- Apply silicone or urethane sealer (natural cure sealants only) to the 5mm drilled rivet holes.
- Attach lugs to the roof of vehicle using 5mm rivets as shown.



This fitment uses Structural Non-Sealed rivets for strengthening reasons

⚠ Silicon must be applied to the top of the rivet to prevent water ingress.



*Image can be different from the actual lugs and cover plates provided.

Wedgetail Rails and Platform Fitting Instruction

To suit Isuzu Dmax Extra Cab / Mazda BT50 Extra Cab

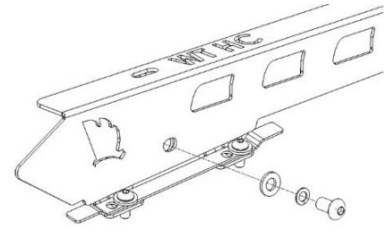


WT-IDMAXXCAB-1113

WT-BT50XC-1113

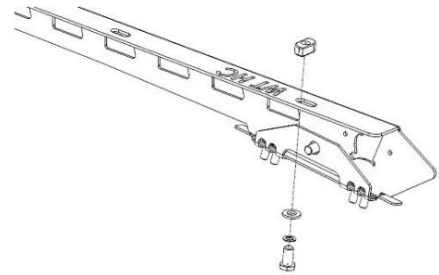
8

- Attach Rails to lugs using 10mm hardware with the Wedgetail logo facing to the front of the vehicle. Refer to the diagram below. Do not tighten fully.



9

- Attach the channel nuts to the top of rail.
 - Fit 10mm Bolt / Split washer / Flat washer / Channel Nuts to the top of rail.
- * Channel nuts to the top as shown in the following diagram



Assemble the Wedgetail Platform to the rails

10

- Place the Wedgetail Platform on the rails (Wind deflector mounting towards the front of vehicle), then spin the channel nuts 90 degree in the channel on the underside of the rack till they lock into the channels. Do not tighten fully.

11

- Centralize the rack side to side (using a tape measure) on the wedgetail rails.

12

- Fully tighten remaining bolts in the following order:
 1. Rails to the lugs
 2. Rails to platform
 3. Attach wind Deflector.

NOTE-Ensure the channel nuts are 90 degrees to the channels.



Check fastenings are firmly tensioned at regular intervals.

Do not overtighten, this will preserve the spring washers.

Thank you for your purchase.

Please complete your warranty application following correct installation.

Wedgetail by Tradesman Roof Racks

Innovation through Inspiration